

# Lyall Street, SW1

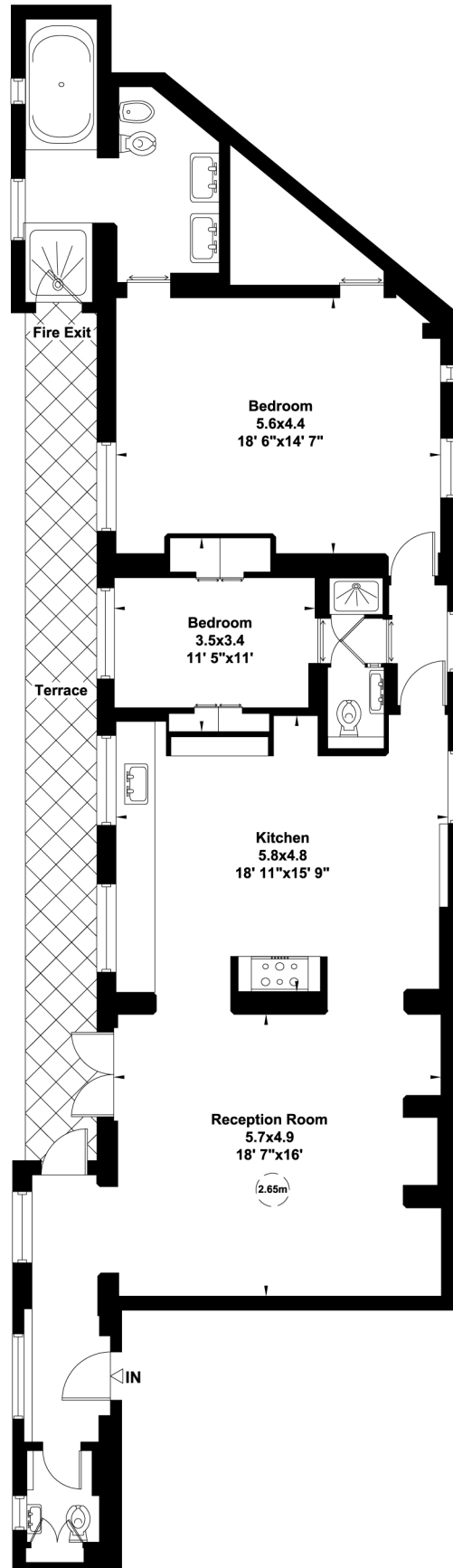
Gross internal area (approx.)

125 Sq m (1350 Sq ft)

For identification only, Not to Scale



capital 020 8671 7722



## Second Floor

Not to scale, for guidance only and must not be relied upon as a statement of fact. All measurements and areas are approximate only (and have been prepared in accordance with the current edition of the RICS Code of Measuring Practice).